



CUSTOM AMPLIFICATION

B500 BASS PREAMP

OWNERS MANUAL

REV B



Copyright 2016, Sluggo Music Technology LLC
All Rights Reserved.

Sluggo Music Limited Warranty

Sluggo Music Technology LLC warrants this product to be free of defects in material and workmanship for the period of one year from the date of original purchase. This warranty is only applicable to the original retail purchaser. To be protected by this warranty, the purchaser must complete the online warranty form within 14 days of the date of purchase. During the warranty period Sluggo Music shall, at its sole discretion, either repair or replace, free of charge, any product that it deems to be defective upon inspection by Sluggo Music Technology LLC or its **authorized service representative**. To obtain warranty service, the purchaser must first obtain a Return Authorization Number from our service department and shipping address where to return the unit for service. All authorized returns must be sent to our service department postage prepaid, insured for full replacement value, properly packaged and accompanied with a description of the problem. Sluggo Music reserves the right to update any unit returned for repair and the right to change or improve the design of the product at any time without prior notice. This warranty does not cover claims for damage due to abuse, neglect, alteration or attempted repair by unauthorized personnel, and is limited to failures arising during normal use that are due to defects in material or workmanship in the product only. Any warranties, including implied warranties of merchantability and fitness for a particular purpose, are limited in duration to the length of this original warranty. In no event will Sluggo Music Technology LLC be liable for incidental or consequential damages resulting from the breach of any express or implied warranty including damage to property, damage based on inconvenience or loss of use of the product, and personal injury to the extent permitted by law. This warranty gives you specific legal rights, which may vary from state to state. This warranty applies only to products sold in the United States of America. For warranty information in all other countries please refer to your local distributor.

Sluggo Music Technology LLC
P.O. Box 913
Dunedin, FL 34697-0913
(727) 247-2520

sales@sluggomusic.com
service@sluggomusic.com

**SUNCOAST™ is a trademark of
Sluggo Music Technology LLC, Copyright 2016
All Rights Reserved**

1 Overview

- 1.1 Introduction
- 1.2 Features

2 Controls

- 2.1 Front Panel Layout
- 2.2 Preamp Controls
- 2.3 Front Panel Jacks
- 2.4 Front Panel Switches

3 Operation

- 3.1 Preamp tone settings
- 3.2 Operating Instructions

4 Technical

- 4.1 Specifications
- 4.2 Block Diagram

1.1 Introduction

Thank you for purchasing the SUNCOAST – B500 Bass Preamp. It is our commitment to providing our customers with the highest quality, musical instrument preamp/processors, designed and built in the USA.

1.2 Features

The following is a summary of your B500 Bass Preamp's unique features:

- The Ultimate Solid-State Bass Preamp in a 500 Series Studio Module. Also works great with Guitar and Bass Synthesizers.
- Compatible with API and Radial® Workhorse™ standards.
- Front panel ¼" mono Instrument Input and buffered Loop Output.
- Active 3-Band EQ with Bass, Midrange and Treble (+/-15dB).
- Variable Midrange Frequency control (70Hz - 2 KHz).
- Dual knee Compressor/Limiter with variable Threshold control.
- 100% discreet analog circuit design utilizing precision surface mount technology.
- Low Noise, Balanced Inputs and Outputs, Mono Buss Feed Output.
- Gold plated I/O connector.
- Solid, Aluminum Chassis, Durable Black Satin Powder Coating.



2.1 Front Panel Layout



2.2 Preamp Controls

Drive - The Drive control adjusts the input level of the preamp.

Volume - The Volume control adjusts the output level of the preamp.

Threshold - This control adjusts the limiter threshold (-10dB to +10dB).

Bass - This tone control adjusts the amount of low frequencies (+/-15dB).

Middle - This tone control adjusts the amount of mid frequencies (+/-15dB).

Freq - This control adjusts the midrange center frequency (70Hz – 2 KHz).

Treble - This tone control adjusts the amount of high frequencies (+/-15dB).

2.3 Front Panel Jacks

Input - ¼" mono instrument Input (1M ohm Input Impedance).

Loop Output - ¼" mono buffered Loop Output.

2.4 Front Panel Switches

Gain Switch – Adds +10dB of input gain for low output instrument pickups.

Boost Switch – Adds +10dB Mid/Treble Boost.

EQ Switch – Shifts Bass, Midrange and Treble center Frequencies.
(30/50Hz, 70Hz-2kHz/150Hz-4kHz and 4/6kHz)

Limiter Switch – Turns the Limiter On/Off.

3.1 Preamp Tone Settings

These settings are merely a suggested starting point from which you can set to your own personal taste.

Drive – 5

Volume – 7 (adjust for desired loudness)

Limiter - 5

Bass – 7

Freq - 300

Middle – 4

Treble – 5

3.2 Operating Instructions

- Always connect your instrument input and preamp output prior to turning the unit ON.
- Use only quality coaxial instrument cable (guitar cord) patching your preamp to your amplifier.
- Always connect the unit a proper power source and use a grounded outlet strip, otherwise a shock hazard may result, especially when the unit is connected to other equipment. Connection to improper line voltage may cause permanent damage.
- Do not expose this unit to rain or excessive moisture. This may cause a shock hazard or damage to the unit.

SAFETY NOTICE: There are no user serviceable parts inside the unit. Refer servicing to qualified personnel only.

4.1 Specifications

Input Voltage – +/- 16VDC

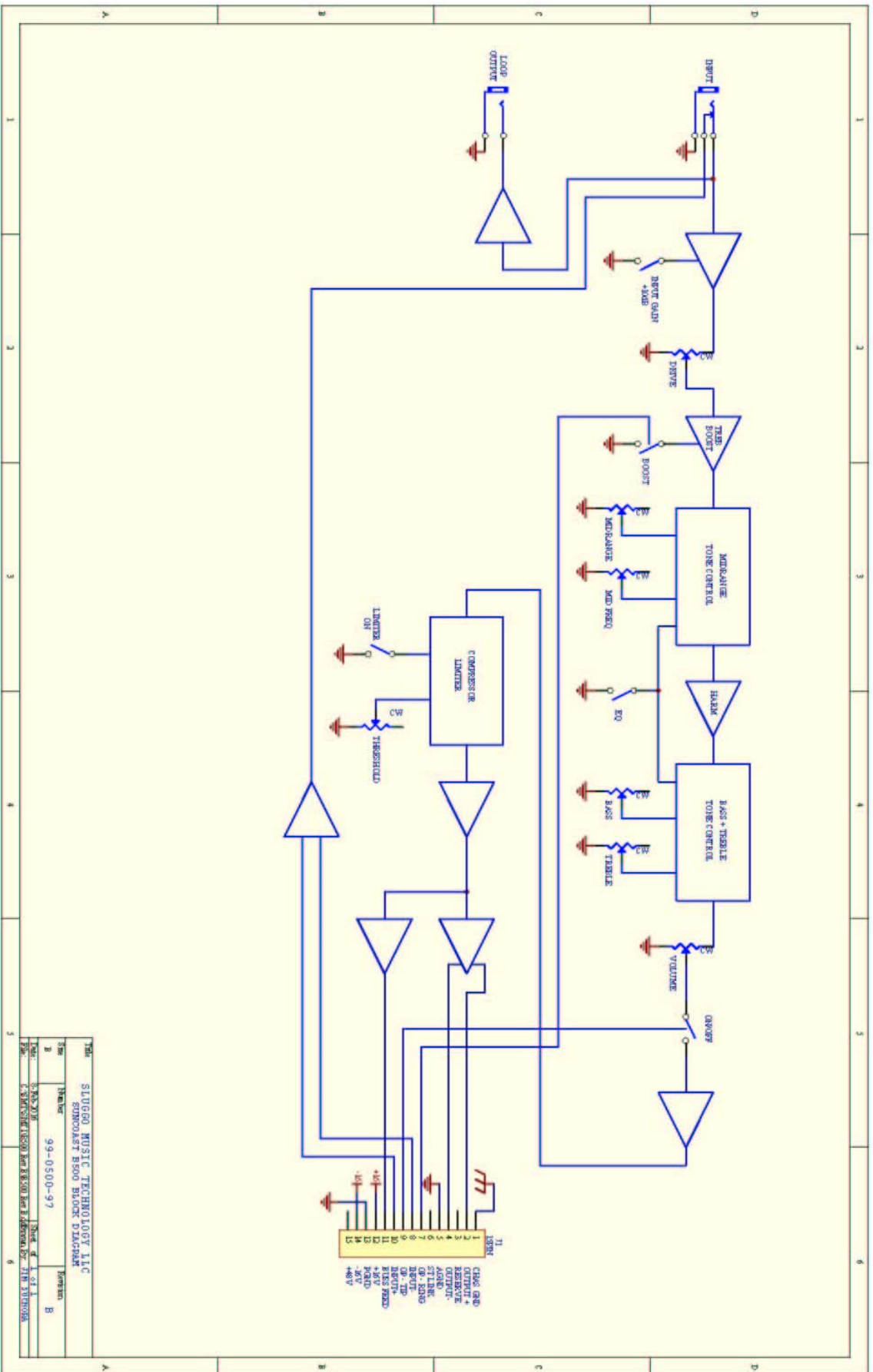
Current Consumption – 170mA

Input Impedance – 1Meg Ohm

Output Impedance – 600 Ohms

Dimensions – 3”W x 5”H x 7”D

Weight – 1 lbs



TITLE: SLUGGO MUSIC TECHNOLOGY LLC
 SUBCIRCUIT: B500 BLOCK DIAGRAM
 DATE: 3/26/2016
 TIME: 9:49:00 AM
 FILE: C:\PROGRAMS\TANGO\B500.BLOCK.DIAGRAM